

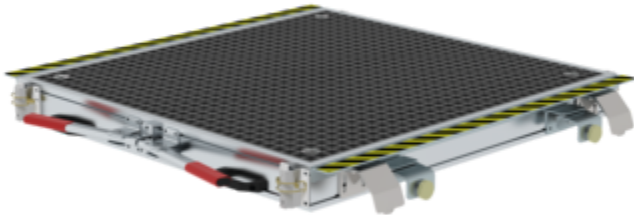
Order no.: 331038

## Mobile track platform

Platform covering

Aluminium corrugated

GRP grating



### Specification

Top surface depth 1.26 m	Top surface width 1.33 m	Step/Platform surface GRP grating	Non-slip class R13	Max. load capacity 300 kg
Material Aluminium	Transport dimensions (plus packaging) 1550 x 1500 x 300 mm, 54 kg	Business division MUNK Günzburger Steigtechnik	Order no. 331038	

### Facts

- Aluminium work platform
- Anti-slip platform covering in GRP grating R13
- Adaptable to different track types thanks to adjustable supports
- Suitable for main track types S49, S54 and 60E
- Easy and safe moving of the track platform thanks to automatic brake and double operating lever
- Robust and maintenance-free castors
- Flush transition to the track area with warning marking

- Push-fit railing with knee rail and toe board available as accessories for end faces
- Optional connecting piece means it can be coupled with other track platforms without gaps, making it possible to cover complete track pits
- Maximum load: 300 kg

### Scope of supply

- Platform: 1 x
- Instructions for use and operation: 1 x

### Information on sustainability criteria

- Corporate certification: ISO 9001
- Corporate certification: ISO 14001
- Corporate certification: EN 1090
- Corporate certification: EcoVadis
- RoHS
- REACH
- The MUNK Group complies with a Code of Conduct
- The Supply Chain Act does not apply due to our size
- The materials used are listed in the technical specification
- Resource-saving production: own photovoltaic systems
- Energy-efficient consumption during production: LED lighting
- Repairability, durability and quality: 15-year warranty on series products made in Germany
- Recyclability: Our products are mostly made of aluminium, steel or wood and can be fed directly into the recycling process.
- Socially acceptable working conditions in production: fair wages, gender equality
- Economical and recyclable packaging: no use of polystyrene, predominantly use of wood and cardboard, small amounts of plastic
- No health hazards for the users

### More product pictures

## Added value



Can the rail platform be used on different rail systems?

Yes. The rail platform is designed for the common main rail types S49, S54 and 60E. Thanks to adjustable supports, the platform can be precisely adapted to the respective rail profile. This ensures that the platform sits securely and stably on the rail. No additional substructure or temporary solutions are required, allowing safe work directly in the track area.

Is the rail platform slip-resistant and suitable for safe working?

Yes. The working surface is equipped with anti-slip properties. It provides secure footing even in wet conditions or in the presence of dirt or oily residues. The flush transition to the track area with warning markings makes access easier and reduces the risk of tripping when stepping on or off the platform.

What is the maximum load capacity of the rail platform?

The maximum load capacity is 300 kg. This allows the rail platform to safely support one person including tools, materials or small equipment. The high load capacity makes it particularly suitable for maintenance, inspection and servicing work in the rail and industrial sectors.

Can the rail platform be moved easily?

Yes. The rail platform is mobile and equipped with robust, maintenance-free castors. An automatic brake system combined with a dual operating lever ensures controlled movement and reliable locking during use. This allows the platform to be positioned quickly without compromising stability.

Can the rail platform be extended or combined with other platforms?

Yes. With an optional [connection element](#), multiple rail platforms can be joined together seamlessly. This makes it possible to safely cover larger working areas or even complete track pits. For additional safety, a plug-in [guardrail](#) with knee rail and toe board is available as an accessory for the end sides.

What applications is the rail platform particularly suitable for?

The mobile rail platform has been developed for professional use in rail, industrial and maintenance environments.

The combination of industrial-grade quality, 300 kg load capacity, slip-resistant platform and mobile design makes it ideal for tasks where safety, efficiency and flexibility in the track area are essential.

## Corporate certifications

---

### Standards for quality and sustainability

