

Order no.: 052083

Platform ladder (push-fit)



Ascent securing

2 handrails

Foldable handle

compact

Specification

| | | | | |
|--|--|--|--|------------------------------|
| Working height 2.7 m | Step design Steps | Number of steps/rungs 3 steps | Platform included as step Yes | Platform height 690 mm |
| Step depth 80 mm | Step/Rung distance 235 mm | Height 1.43 m | Ladder length 1.52 m | Base spread 850 mm |
| Inclination 70 ° | Lower outer width 570 mm | Depth of side-rails 73 mm | Depth of side-rails, support 58 mm | Max. load capacity 150 kg |
| Design type Freestanding Single-sided access | Transport dimensions (plus packaging) 1515 x 572 x 280 mm, 9.5 kg | Business division MUNK Günzburger Steigtechnik | Order no. 052083 | |

Facts

- Platform ladder made of aluminium
- Grooved steps with a depth of 80 mm
- 4-fold edged step-to-side-rail connection
- Large, trapeze-shaped platform (400 / 360 x 425 mm)

- Flexible means of extension thanks to optional push-fit sections
- 'safe-cap' ladder joint
- Practical storage tray (350 x 200 mm)
- Spreader lock with two high-strength polyester straps
- Two handrails for safe ascent and descent (enclosed separately)
- Coloured coating of the beams for easy pairing identification
- Space-saving transport and storage
- Can optionally be equipped with clip-step step padding, clip-step R13 and clip-step relax
- Step spacing: 235 mm
- Maximum load: 150 kg

Scope of supply

- Ladder: 1 x
- Handrail (enclosed separately): 2 x
- Instructions for use and operation: 1 x

Information on sustainability criteria

- Corporate certification: ISO 9001
- Corporate certification: ISO 14001
- Corporate certification: EN 1090
- Corporate certification: EcoVadis
- RoHS
- REACH
- The MUNK Group complies with a Code of Conduct
- The Supply Chain Act does not apply due to our size
- The materials used are listed in the technical specification
- Resource-saving production: own photovoltaic systems
- Energy-efficient consumption during production: LED lighting

- Repairability, durability and quality: 15-year warranty on series products made in Germany
- Recyclability: Our products are mostly made of aluminium, steel or wood and can be fed directly into the recycling process.
- Socially acceptable working conditions in production: fair wages, gender equality
- Economical and recyclable packaging: no use of polystyrene, predominantly use of wood and cardboard, small amounts of plastic
- No health hazards for the users

More product pictures



Added value

Safe working

- Handrails for safe ascent and descent
- Large-format, non-slip platforms
- Conical side-rail guide for safe stance
- Railings and knee boards for safe access and stance



Storage tray

- For the practical storage of small parts
- Made from high-quality plastic
- Partly with integrated hooks and tool holders
- Different versions, depending on the ladder model



The movable ladder shoe sets new standards in stability

[Learn more](#)



Industrial grade

Stable and robust for tough everyday working life (including 4-way edging)

- Corrosion-resistant fixtures
- Use of high-quality and high-strength materials
- Versatile and practical accessories



Ladder joint safe-cap

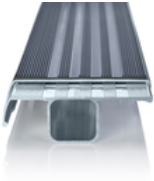
- Smooth ladder joint with large contact surface and sturdy plastic protective cap
- The 6 rivets and thicker wall thickness provide for greater stability and protection at this sensitive point on the ladder, increasing its service life
- The safe-cap protects the ladder when in use, when loading and storing, as well as the contact surfaces, walls, truck loading areas and the joint itself



clip-step step padding

Optimised and certified non-slip protection for greater comfort and safety

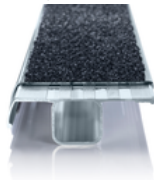
- Made of grooved plastic
- Exact fit and easy to clip onto the steps
- Applied up to the maximum accessible step as a visual check
- Retrofittable and available as spare part



clip-step R 13 step padding

Certified non-slip protection for step ladders

- Fulfils the requirements of the highest possible non-slip class R 13 thanks to aluminium oxide particles
- Improves work safety in wet and oil-contaminated environments
- Applied up to the maximum accessible step as a visual check
- Retrofittable, available as a spare part and also in yellow in selected lengths (RAL 1021)



ergo-pad® grip area

For easier and more ergonomic handling at the optimum carrying point



Castors

- Ergonomic and comfortable handling
- Simple movement from place to place



Sponsored by BG BAU

Specification subject to conditions; for the latest information please visit the BG BAU website (statutory accident insurance company for the construction and construction related services in Germany). Since 2014, the BG BAU has been promoting the purchase of platform ladders, step stools and ladder accessories with single-sided and double-sided access. All members of the BG BAU profit from this. This aims to prevent work accidents on building sites and improve ergonomic working practices. For more information by BG BAU, please visit:
www.bgbau.de/service/angebote/arbeitsschutzpraemien

A brief overview of the subsidy and an overview of our eligible products can be found on our website under [know-how](#).

Corporate certifications

Standards for quality and sustainability

