

Order no.: 052087

Platform ladder (push-fit)



Ascent securing

2 handrails

Foldable handle

compact



Specification

Working height 2.45 m	Step design Steps	Number of steps/rungs 2 steps	Platform included as step Yes	Platform height 450 mm
Step depth 80 mm	Step/Rung distance 235 mm	Height 1.2 m	Ladder length 1.27 m	Base spread 713 mm
Inclination 70 °	Lower outer width 570 mm	Depth of side-rails 73 mm	Depth of side-rails, support 58 mm	Max. load capacity 150 kg
Design type Freestanding Single-sided access	Transport dimensions 1267 x 575 x 280 mm, 8.57 kg	Business division MUNK Günzburger Steigtechnik	Order no. 052087	

Facts

- Platform ladder made of aluminium
- Grooved steps with a depth of 80 mm
- 4-fold edged step-to-side-rail connection
- Large, trapeze-shaped platform (400 / 360 x 425 mm)

- Flexible means of extension thanks to optional push-fit sections
- 'safe-cap' ladder joint
- Practical storage tray (350 x 200 mm)
- Spreader lock with two high-strength polyester straps
- Two handrails for safe ascent and descent (enclosed separately)
- Coloured coating of the beams for easy pairing identification
- Space-saving transport and storage
- Can optionally be equipped with clip-step step padding, clip-step R13 and clip-step relax
- Step spacing: 235 mm
- Maximum load: 150 kg

Scope of supply

- Ladder: 1 x
- Handrail (enclosed separately): 2 x
- Instructions for use and operation: 1 x

Information on sustainability criteria

- Corporate certification: ISO 9001
- Corporate certification: ISO 14001
- Corporate certification: EN 1090
- Corporate certification: EcoVadis
- RoHS
- REACH
- The MUNK Group complies with a Code of Conduct
- The Supply Chain Act does not apply due to our size
- The materials used are listed in the technical specification
- Resource-saving production: own photovoltaic systems
- Energy-efficient consumption during production: LED lighting

- Repairability, durability and quality: 15-year warranty on series products made in Germany
- Recyclability: Our products are mostly made of aluminium, steel or wood and can be fed directly into the recycling process.
- Socially acceptable working conditions in production: fair wages, gender equality
- Economical and recyclable packaging: no use of polystyrene, predominantly use of wood and cardboard, small amounts of plastic
- No health hazards for the users

More product pictures



Added value

Safe working

- Handrails for safe ascent and descent
- Large-format, non-slip platforms
- Conical side-rail guide for safe stance
- Railings and knee boards for safe access and stance



Storage tray

- For the practical storage of small parts
- Made from high-quality plastic
- Partly with integrated hooks and tool holders
- Different versions, depending on the ladder model



The movable ladder shoe sets new standards in stability

[Learn more](#)



Industrial grade

Stable and robust for tough everyday working life (including 4-way edging)

- Corrosion-resistant fixtures
- Use of high-quality and high-strength materials
- Versatile and practical accessories



Ladder joint safe-cap

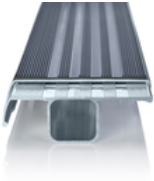
- Smooth ladder joint with large contact surface and sturdy plastic protective cap
- The 6 rivets and thicker wall thickness provide for greater stability and protection at this sensitive point on the ladder, increasing its service life
- The safe-cap protects the ladder when in use, when loading and storing, as well as the contact surfaces, walls, truck loading areas and the joint itself



clip-step step padding

Optimised and certified non-slip protection for greater comfort and safety

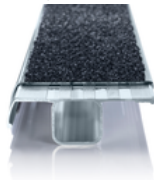
- Made of grooved plastic
- Exact fit and easy to clip onto the steps
- Applied up to the maximum accessible step as a visual check
- Retrofittable and available as spare part



clip-step R 13 step padding

Certified non-slip protection for step ladders

- Fulfils the requirements of the highest possible non-slip class R 13 thanks to aluminium oxide particles
- Improves work safety in wet and oil-contaminated environments
- Applied up to the maximum accessible step as a visual check
- Retrofittable, available as a spare part and also in yellow in selected lengths (RAL 1021)



ergo-pad® grip area

For easier and more ergonomic handling at the optimum carrying point



Castors

- Ergonomic and comfortable handling
- Simple movement from place to place



Corporate certifications

Standards for quality and sustainability

