

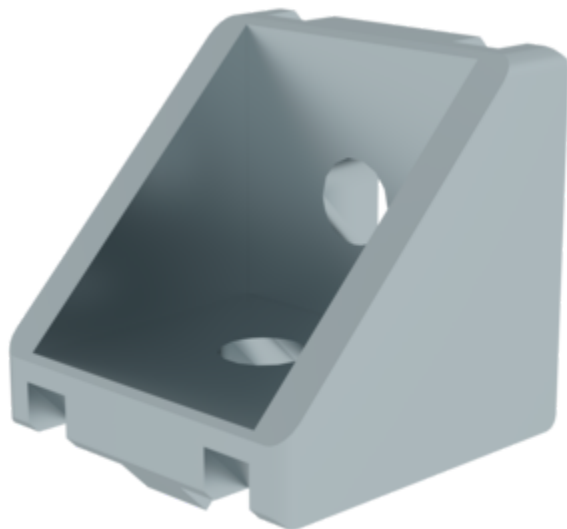
Order no.: 930207

Corner bracket 30x30 mm

Type

30x30

40x40



Specification

Connection type Angle connection	Material Die-cast	Weight/piece 23 g	Groove size 6 mm	Dimension A 30 mm
Dimension B 30 mm	Dimension C 30 mm	Dimension D 5 mm	Business division MUNK Profiltechnik	Order no. 930207

Facts

- Profile angle for profile 30
- For joining profiles to each other
- Particularly suitable for retrofitting profiles

Description

Secure 90° connections for modular construction kits – optionally for groove 6 in 30 mm profiles or groove 8 in 40 mm profiles.

Key advantages

- Universally applicable: Suitable for all MUNK construction profiles 30 × 30 mm (groove 6) or 40 × 40 mm (groove 8) – ideal for right-angled frames, racks and protective enclosures.
- Easy to retrofit: Can be swivelled into open grooves; perfect for extensions without dismantling entire assemblies.

- Robust & durable: Die-cast body with 5 mm wall thickness for high clamping forces and permanent angle stability.
- Clean appearance: Internal screws conceal fastening points and ensure smooth outer surfaces.

Typical applications

- Machine frames: Reinforcement of 30 or 40 mm profiles without welding.
- Protective and test enclosures: Quick assembly of stable 90° frames with glass or mesh panels.
- Assembly tables and workstations: Retrofitting of shelves, guide plates or swivel arms.
- Transport racks: Torsion-resistant corner connections for tow tractors and load carriers.

Assembly instructions

Insert or swing in the groove nut (not included), attach the corner bracket, tighten the screw (not included) with an Allen key – done. The connection remains detachable and can be moved or extended at any time.

Scope of supply

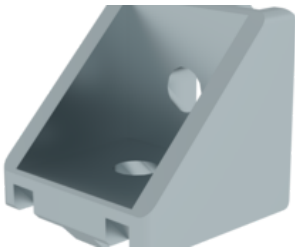
- Corner bracket: 1 x

Information on sustainability criteria

- Corporate certification: ISO 9001
- Corporate certification: ISO 14001
- Corporate certification: EN 1090
- Corporate certification: EcoVadis
- RoHS
- REACH
- The MUNK Group complies with a Code of Conduct

- The Supply Chain Act does not apply due to our size
- The materials used are listed in the technical specification
- Resource-saving production: own photovoltaic systems
- Energy-efficient consumption during production: LED lighting
- Repairability, durability and quality: 15-year warranty on series products made in Germany
- Recyclability: Our products are mostly made of aluminium, steel or wood and can be fed directly into the recycling process.
- Socially acceptable working conditions in production: fair wages, gender equality
- Economical and recyclable packaging: no use of polystyrene, predominantly use of wood and cardboard, small amounts of plastic
- No health hazards for the users

More product pictures



Corporate certifications

Standards for quality and sustainability

