

Order no.: 042712

## Double-sided stepladder suitable for stairs



Number of steps/rungs

2x5

2x6

2x7

2x8

### Specification

Working height 3.2 m	Step design Steps	Number of steps/rungs 2x 6 steps	Step depth 80 mm	Step/Rung distance 235 mm
Type of non-slip protection Aluminium corrugated	Height 1.38 m	Total length folded 1.49 m	Base spread 1.2 m	Base spread max. extended 1.46 m
Inclination 70 °	Lower outer width, ascent unit extended 644 mm	Lower outer width, ladder retracted 610 mm	Lower outer width, support part extended 710 mm	Max. adjustment range on the ascent unit 300 mm
Max. adjustment range on the support part 800 mm	Depth of side-rails 73 mm	Width of side-rails 24.5 mm	Max. load capacity 150 kg	Design type Freestanding   Double-sided access   Suitable for stairs
Transport dimensions (plus packaging) 1250 x 610 x 210 mm, 15 kg	Business division MUNK Günzburger Steigtechnik	Order no. 042712		

### Facts

- Stepladder made of aluminium
- Stable rectangular tube side-rails
- Grooved steps with a depth of 80 mm

- 4-fold edged step-to-side-rail connection
- Conical side-rail guide for safe stance
- Four bar extensions with solid sliding guide and ergonomic star handle
- Seamlessly adjustable: ascent section up to 300 mm, support section up to 800 mm
- External adjustment mechanism / star handle for safe walking on the ladder without tripping hazard
- nivello® ladder shoes with patented 2-axis inclination technology
- Sturdy, solid aluminium ladder joint, securely screwed in place
- Can optionally be equipped with clip-step step padding, clip-step R13 and clip-step relax
- Step spacing: 235 mm
- Maximum load: 150 kg

### Scope of supply

- Ladder: 1 x

### Information on sustainability criteria

- Corporate certification: ISO 9001
- Corporate certification: ISO 14001
- Corporate certification: EN 1090
- Corporate certification: EcoVadis
- RoHS
- REACH
- The MUNK Group complies with a Code of Conduct
- The Supply Chain Act does not apply due to our size
- The materials used are listed in the technical specification
- Resource-saving production: own photovoltaic systems
- Energy-efficient consumption during production: LED lighting

- Repairability, durability and quality: 15-year warranty on series products made in Germany
- Recyclability: Our products are mostly made of aluminium, steel or wood and can be fed directly into the recycling process.
- Socially acceptable working conditions in production: fair wages, gender equality
- Economical and recyclable packaging: no use of polystyrene, predominantly use of wood and cardboard, small amounts of plastic
- No health hazards for the users

More product pictures

---

## Added value

---

### Industrial grade

Stable and robust for tough everyday working life (including 4-way edging)

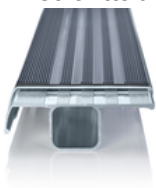
- Corrosion-resistant fixtures
- Use of high-quality and high-strength materials
- Versatile and practical accessories



### clip-step step padding

Optimised and certified non-slip protection for greater comfort and safety

- Made of grooved plastic
- Exact fit and easy to clip onto the steps
- Applied up to the maximum accessible step as a visual check
- Retrofittable and available as spare part



The movable ladder shoe sets new standards in stability

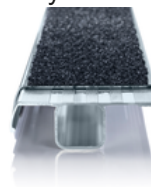
### [Learn more](#)



### clip-step R 13 step padding

Certified non-slip protection for step ladders

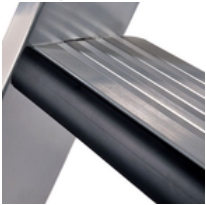
- Fulfils the requirements of the highest possible non-slip class R 13 thanks to aluminium oxide particles
- Improves work safety in wet and oil-contaminated environments
- Applied up to the maximum accessible step as a visual check
- Retrofittable, available as a spare part and also in yellow in selected lengths (RAL 1021)



### relax step® step padding

Greater comfort during prolonged periods of working on the ladder

- Worked into the leading edge of the step
- Pads the front edge of the ladder step
- Comfortable cushioning for leaning and bracing against the next step



## Corporate certifications

---

### Standards for quality and sustainability

