

Order no.: 034212

## Double-sided step ladder GFRP

Number of steps

2x4

2x5

2x6

2x7



### Specification

Working height 2.9 m	Step design Steps	Number of steps/rungs 2x 6 steps	Step depth 80 mm	Step/Rung distance 235 mm
Height 1.47 m	Ladder length 1.55 m	Base spread 1.22 m	Inclination 70 °	Lower outer width 530 mm
Upper outer width 364 mm	Depth of side-rails 73 mm	Width of side-rails 25 mm	Max. load capacity 150 kg	Design type Freestanding   Double-sided access
BG BAU supported No	Transport dimensions (plus packaging) 1553 x 530 x 221 mm, 13.8 kg	Business division MUNK Günzburger Steigtechnik	Order no. 034212	

### Facts

- Double-sided stepladder made of GFRP
- Side-rails and steps made of glass-fibre reinforced plastic profiles (min. 10 years ageing resistance when stored and used as intended)
- High-strength step-to-side-rail connection
- Conical side-rail guide for safe stance

- nivello® ladder shoes with patented 2-axis inclination technology
- Transport securing straps
- Solid, powder-coated, galvanised steel hinges with screw attachment
- Spreader lock with two high-strength polyester straps
- Step spacing: 235 mm
- Ladder inclination: 70°
- Maximum load: 150 kg
- Suitable for working near or on live parts
- Tested in accordance with DIN EN 61478:2002 + DIN EN 61478/A1:2004, Section 6.5.1, Category 1: 60,000 V
- Note: Products with GFRP content are non-returnable, due to their sensitivity; the statutory warranty applies (ageing resistance 10 years)

### Scope of supply

- Ladder: 1 x

### Information on sustainability criteria

- Corporate certification: ISO 9001
- Corporate certification: ISO 14001
- Corporate certification: EN 1090
- Corporate certification: EcoVadis
- RoHS
- REACH
- The MUNK Group complies with a Code of Conduct
- The Supply Chain Act does not apply due to our size
- The materials used are listed in the technical specification
- Resource-saving production: own photovoltaic systems
- Energy-efficient consumption during production: LED lighting

- Repairability, durability and quality: 15-year warranty on series products made in Germany
- Recyclability: Our products are mostly made of aluminium, steel or wood and can be fed directly into the recycling process.
- Socially acceptable working conditions in production: fair wages, gender equality
- Economical and recyclable packaging: no use of polystyrene, predominantly use of wood and cardboard, small amounts of plastic
- No health hazards for the users

More product pictures

---

## Added value

---

### Industrial grade

Stable and robust for tough everyday working life (including 4-way edging)

- Corrosion-resistant fixtures
- Use of high-quality and high-strength materials
- Versatile and practical accessories



### Ladder joint safe-cap

- Smooth ladder joint with large contact surface and sturdy plastic protective cap
- The 6 rivets and thicker wall thickness provide for greater stability and protection at this sensitive point on the ladder, increasing its service life
- The safe-cap protects the ladder when in use, when loading and storing, as well as the contact surfaces, walls, truck loading areas and the joint itself



### Storage tray

- For the practical storage of small parts
- Made from high-quality plastic
- Partly with integrated hooks and tool holders
- Different versions, depending on the ladder model



The movable ladder shoe sets new standards in stability

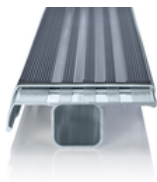
[Learn more](#)



### clip-step step padding

Optimised and certified non-slip protection for greater comfort and safety

- Made of grooved plastic
- Exact fit and easy to clip onto the steps
- Applied up to the maximum accessible step as a visual check
- Retrofittable and available as spare part



### Rung Safe R 13

Certified non-slip protection for rung ladders

- Fulfils the requirements of the highest possible non-slip class R 13 thanks to aluminium oxide particles
- Improves work safety in wet and oil-contaminated environments
- Applied up to the maximum accessible rung as a visual check



### ergo-pad® grip area

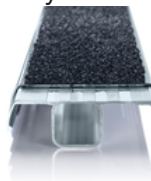
For easier and more ergonomic handling at the optimum carrying point



### clip-step R 13 step padding

Certified non-slip protection for step ladders

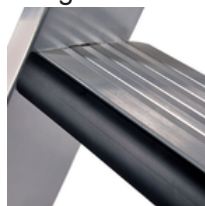
- Fulfils the requirements of the highest possible non-slip class R 13 thanks to aluminium oxide particles
- Improves work safety in wet and oil-contaminated environments
- Applied up to the maximum accessible step as a visual check
- Retrofittable, available as a spare part and also in yellow in selected lengths (RAL 1021)



### relax step® step padding

Greater comfort during prolonged periods of working on the ladder

- Worked into the leading edge of the step
- Pads the front edge of the ladder step
- Comfortable cushioning for leaning and bracing against the next step



### Spring-loaded castors

- High stability, easy to change position
- Easy to move the ladder when it is set up
- Self-locking
- Also retrofittable and available as a spare part



## Corporate certifications

---

### Standards for quality and sustainability



Management System  
ISO 9001:2015  
ISO 14001:2015  
[www.tuv.com](http://www.tuv.com)  
ID 9108612548

