



Order no.: 040676

Step push-up extension ladder 2-section with nivello® stabiliser and clip-step R13



Number of steps

2x7

2x9

11 + 10

14 + 10

Specification

Working height 6.2 m	Step design Steps	Number of steps/rungs 11 + 10 steps	Step depth 80 mm	Step/Rung distance 263 mm
Retracted length 3.33 m	Extended length 5.6 m	Inclination 70 °	Outer width 420 mm	Stabiliser width 1.2 m
Depth of side-rails 85 mm	Width of side-rails 25 mm	Design type To lean against 2- part	Transport dimensions (plus packaging) 3330 x 504 x 210 mm, 21.7 kg	Predecessor product 040634
Business division MUNK Günzburger Steigtechnik	Order no. 040676			

Facts

- Aluminium stepladder
- Stable rectangular tube side-rails
- Grooved steps with a depth of 80 mm
- 4-fold edged step-to-side-rail connection

- Simple height adjustment and safer locking from the front due to corrosion-resistant push-fit fittings on the sides
- Extra wide base area of 170 mm in depth in the overlap area of the lower and upper ladders
- Upper ladder with ladder head protection (Velcro tape) for fastening to gutters or similar.
- Lower ladder with nivello® stabiliser for extra stability and safe ascent (enclosed separately)
- Upper ladder with nivello® ladder shoes, as removable for individual use
- clip-step R13 step padding for certified non-slip protection
- Step spacing: 263 mm
- Ladder width: 420 mm (without stabiliser)
- Ladder inclination: 70°
- Maximum load: 150 kg

Scope of supply

- Ladder: 1 x
- Stabiliser (enclosed separately): 1 x
- Instructions for use and operation: 1 x

Information on sustainability criteria

- Corporate certification: ISO 9001
- Corporate certification: ISO 14001
- Corporate certification: EN 1090
- Corporate certification: EcoVadis
- RoHS
- REACH
- The MUNK Group complies with a Code of Conduct
- The Supply Chain Act does not apply due to our size
- The materials used are listed in the technical specification
- Resource-saving production: own photovoltaic systems

- Energy-efficient consumption during production: LED lighting
- Repairability, durability and quality: 15-year warranty on series products made in Germany
- Recyclability: Our products are mostly made of aluminium, steel or wood and can be fed directly into the recycling process.
- Socially acceptable working conditions in production: fair wages, gender equality
- Economical and recyclable packaging: no use of polystyrene, predominantly use of wood and cardboard, small amounts of plastic
- No health hazards for the users

More product pictures



Added value

Industrial grade

Stable and robust for tough everyday working life (including 4-way edging)

- Corrosion-resistant fixtures
- Use of high-quality and high-strength materials
- Versatile and practical accessories



Large range of accessories

- The right equipment for every application
- Practical and makes work easier
- Suitable for universal use on Günzburger Steigtechnik ladders



Optimum and smooth operation, thanks to easily accessible elements

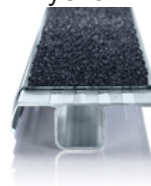
- Simple height adjustment from rung to rung or from step to step
- Wall wheels on the upper part (from 14 rungs or more)
- Fittings with sliding guides
- Smooth-running rope pulley



clip-step R 13 step padding

Certified non-slip protection for step ladders

- Fulfils the requirements of the highest possible non-slip class R 13 thanks to aluminium oxide particles
- Improves work safety in wet and oil-contaminated environments
- Applied up to the maximum accessible step as a visual check
- Retrofittable, available as a spare part and also in yellow in selected lengths (RAL 1021)



nivello® stabiliser

Extra safe, standards-compliant ascent for straight ladders over 3.0 m

- Extra wide stabiliser for even greater stability
- nivello® ladder shoes with patented 2-axis inclination technology, integrated work angle check and exchangeable foot plates
- Individually available as spare part



The movable ladder shoe sets new standards in stability

[Learn more](#)



roll-bar retrofit kit

- Rolling instead of carrying: ergonomic and convenient handling
- Simple, no-drill mounting on stabilisers
- User-friendly operation without bending down



Corporate certifications

Standards for quality and sustainability



Management System
ISO 9001:2015
ISO 14001:2015
www.tuv.com
ID 9108612548

