



Order no.: 022314

3-section rung rope-extension ladder without stabiliser



Number of rungs

3x14 3x16 3x18

Specification

Working height 10.8 m	Step design Sprossen	Number of steps/rungs 3x 14 rungs	Step/Rung height 30 mm	Step depth 30 mm
Step/Rung distance 280 mm	Retracted length 4.1 m	Extended length 9.7 m	Outer width 470 mm	Depth of side-rails 98 mm
Width of side-rails 25 mm	Design type Zum Anlehnen 3-teilig	Transport dimensions (plus packaging) 4190 x 500 x 275 mm, 43 kg	Business division MUNK Günzburger Steigtechnik	Order no. 022314

Facts

- Rung rope-extension ladder made of aluminium
- Stable rectangular tube side-rails
- Rectangular rungs grooved on both sides, 30 x 30 mm
- 4-fold edged rung-to-side-rail connection
- Convenient height adjustment from rung to rung thanks to two pulleys with plastic cable
- Automatically acting locking hooks, middle and upper part adjusted separately

- Upper ladder with wall wheels
- Corrosion-resistant guide fixtures with sliding guides
- Rung distance: 280 mm
- Ladder width: 470 mm (without stabiliser)
- Maximum load: 150 kg
- nivello® ladder shoes with patented 2-axis inclination technology
- Note: Straight ladders over 3.0 m can be used without a stabiliser only when they are used exclusively for their intended purpose (e.g. permanently installed, fitted with hooks, fastened with a belt)
- Note: In accordance with standards, the attached push-up extension ladder section cannot be separated from the ladder with lengths over 3.0 m

Scope of supply

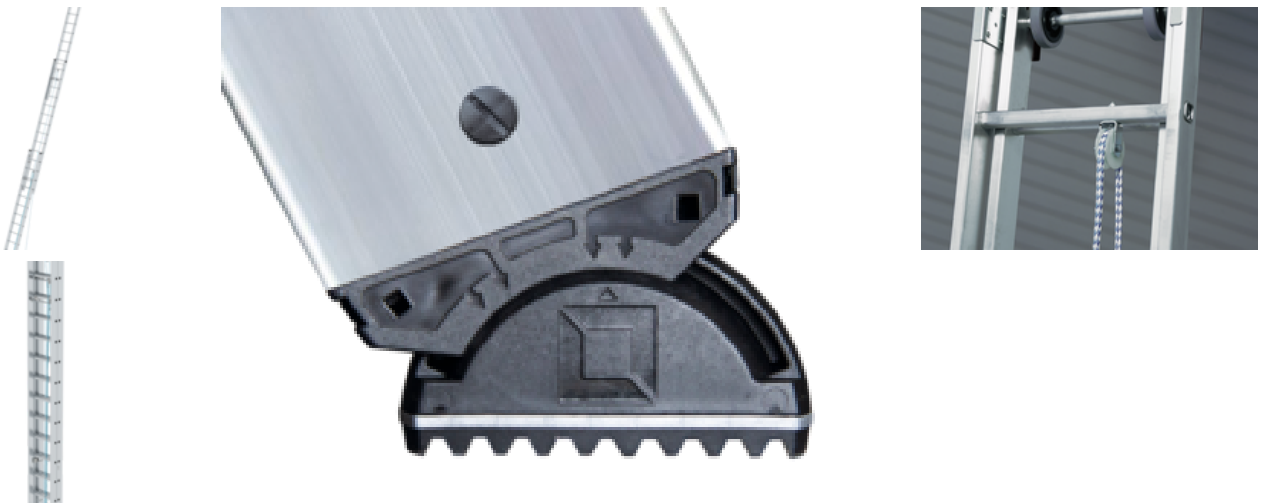
- Ladder: 1 x
- Instructions for use and operation: 1 x

Information on sustainability criteria

- Corporate certification: ISO 9001
- Corporate certification: ISO 14001
- Corporate certification: EN 1090
- Corporate certification: EcoVadis
- RoHS
- REACH
- The MUNK Group complies with a Code of Conduct
- The Supply Chain Act does not apply due to our size
- The materials used are listed in the technical specification
- Resource-saving production: own photovoltaic systems
- Energy-efficient consumption during production: LED lighting

- Repairability, durability and quality: 15-year warranty on series products made in Germany
- Recyclability: Our products are mostly made of aluminium, steel or wood and can be fed directly into the recycling process.
- Socially acceptable working conditions in production: fair wages, gender equality
- Economical and recyclable packaging: no use of polystyrene, predominantly use of wood and cardboard, small amounts of plastic
- No health hazards for the users

More product pictures



Added value

Industrial grade

Stable and robust for tough everyday working life (including 4-way edging)

- Corrosion-resistant fixtures
- Use of high-quality and high-strength materials
- Versatile and practical accessories



Large range of accessories

- The right equipment for every application
- Practical and makes work easier
- Suitable for universal use on Günzburger Steigtechnik ladders



The movable ladder shoe sets new standards in stability

[Learn more](#)



Optimum and smooth operation, thanks to easily accessible elements

- Simple height adjustment from rung to rung or from step to step
- Wall wheels on the upper part (from 14 rungs or more)
- Fittings with sliding guides
- Smooth-running rope pulley



Retrofit stabiliser

Safe, standards-compliant ascent

- For retrofitting existing ladders with ladder lengths over 3.0 m in compliance with standards
- Non-slip ladder shoes
- Available in different widths



Corporate certifications

Standards for quality and sustainability



Management System
ISO 9001:2015
ISO 14001:2015
www.tuv.com
ID 9108612548

