



Order no.: 033029

Double-sided rung ladder



Number of rungs

2x6

2x8

2x10

2x12

2x14

2x16

Specification

Working height 5.7 m	Step design Rungs	Number of steps/rungs 2x 16 rungs	Step/Rung height 30 mm	Step depth 30 mm
Step/Rung distance 280 mm	Type of non-slip protection Aluminium corrugated	Height 4.39 m	Ladder length 4.63 m	Base spread 3.02 m
Inclination 70 °	Lower outer width 820 mm	Depth of side-rails 73 mm	Width of side-rails 25 mm	Max. load capacity 150 kg
Design type Freestanding Double-sided access	Transport dimensions 4610 x 815 x 205 mm, 21 kg	Business division MUNK Günzburger Steigtechnik	Order no. 033029	

Facts

- Double-sided rung ladder made of aluminium
- Stable rectangular tube side-rails
- Rectangular rungs grooved on both sides, 30 x 30 mm
- 4-fold edged rung-to-side-rail connection
- Conical side-rail guide for safe stance

- nivello® ladder shoes with patented 2-axis inclination technology
- Solid, galvanised steel hinges with screw attachment
- Plastic end caps on upper side-rail end
- Spreader lock with two high-strength polyester straps
- Rung distance: 280 mm
- Transport securing straps
- Maximum load: 150 kg

Scope of supply

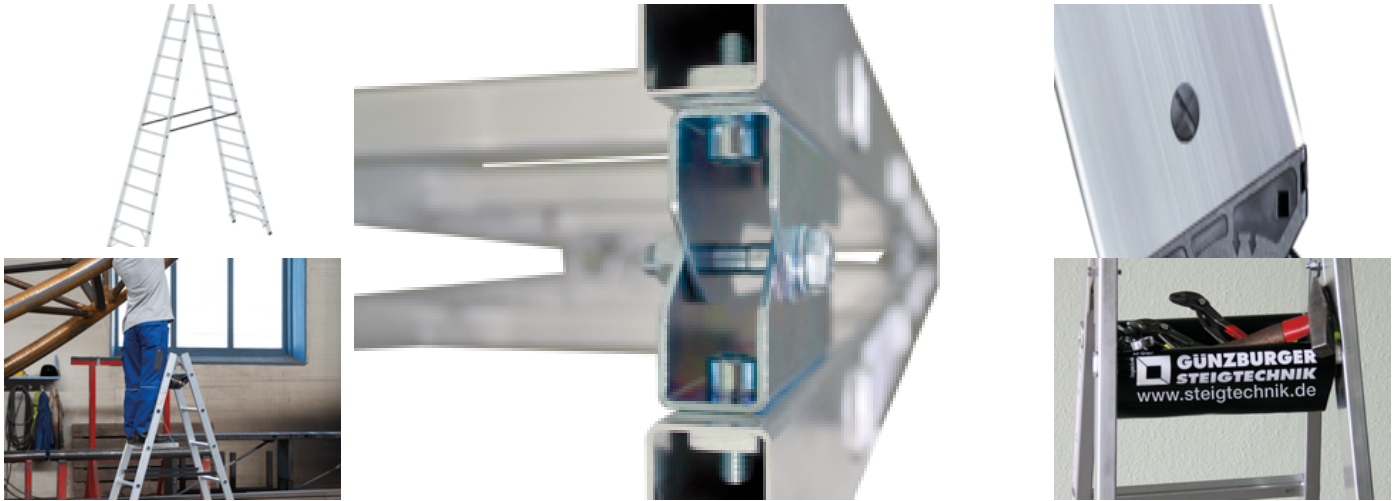
- Ladder: 1 x

Information on sustainability criteria

- Corporate certification: ISO 9001
- Corporate certification: ISO 14001
- Corporate certification: EN 1090
- Corporate certification: EcoVadis
- RoHS
- REACH
- The MUNK Group complies with a Code of Conduct
- The Supply Chain Act does not apply due to our size
- The materials used are listed in the technical specification
- Resource-saving production: own photovoltaic systems
- Energy-efficient consumption during production: LED lighting
- Repairability, durability and quality: 15-year warranty on series products made in Germany
- Recyclability: Our products are mostly made of aluminium, steel or wood and can be fed directly into the recycling process.
- Socially acceptable working conditions in production: fair wages, gender equality
- Economical and recyclable packaging: no use of polystyrene, predominantly use of wood and cardboard, small amounts of plastic

- No health hazards for the users

More product pictures



Added value

Industrial grade

Stable and robust for tough everyday working life
(including 4-way edging)

- Corrosion-resistant fixtures
- Use of high-quality and high-strength materials
- Versatile and practical accessories



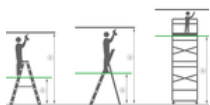
The movable ladder shoe sets new standards in stability

[Learn more](#)




Note: Working heights

- National regulations (e.g. TRBS 2121 Part 2 in Germany) must be complied with with regard to the maximum working height when using the ladder as a workstation.
- Information on [TRBS 2121 Part 2](#) has been summarised on our Service page
- Read our [tips and tricks](#) on how to calculate [working height](#)




Certificates



25KFP0555-01 -
Test Certificate
"Bauart geprüft"

Valid in



DIN EN 131-1:2019
DIN EN 131-2:2017
DIN EN 131-3:2018
EK5/AK1 17-
02.4:2021
PAK-
ANFORDERUNG
FÜR GS (PAH
REQUIREMENT
FOR GS) AFPS GS
2019:01 PAK

Corporate certifications

Standards for quality and sustainability



Management
System
ISO 9001:2015
ISO 14001:2015

www.tuv.com
ID 9108612548



Nachhaltigkeit
EcoVadis
sustainable supply management

CSR-Rating in Silber 2022

