



Order no.: 041418

Step shelf ladder, mobile



Number of steps

6

8

10

12

14

16

18

Specification

Working height 5.8 m	Step design Steps	Number of steps/rungs 18 steps	Step width 370 mm	Step depth 80 mm
Step/Rung distance 235 mm	Vertical hook-in height 4.74 m	Ladder length 4.69 m	Base area 1.8 m	Inclination 70 °
Outer width 420 mm	Castor diameter 80 mm	Max. load capacity 150 kg	Design type Mobile With castors	Transport dimensions (plus packaging) 4860 x 600 x 110 mm, 16.04 kg
Business division MUNK Günzburger Steigtechnik	Order no. 041418			

Facts

- Step shelf ladder made of aluminium
- Stable rectangular tube side-rails
- Grooved steps with a depth of 80 mm
- 4-fold edged step-to-side-rail connection
- Easy to move thanks to smooth-running undercarriage at the upper end

- Compact to store when not in use
- Self-locking spring-loaded castors, Ø 80 mm, at the lower end
- Non-slip ladder shoes
- Step spacing: 235 mm
- Ladder width: 420 mm (without castors)
- Ladder width with castors: 600 mm
- Ladder inclination: 70°
- Maximum load: 150 kg
- Note: Shelf ladders are manufactured in standard lengths stated here as well as individually made to measure. Please indicate the exact vertical hook-in height – the price includes the next higher ladder and a flat rate for changes of 51.00 euros RRP excluding VAT. Shelf ladders made to size are non-returnable

Scope of supply

- Instructions for use and operation: 1 x
- Spring-loaded castor: 2 x
- Ladder: 1 x

Information on sustainability criteria

- Corporate certification: ISO 9001
- Corporate certification: ISO 14001
- Corporate certification: EN 1090
- Corporate certification: EcoVadis
- RoHS
- REACH
- The MUNK Group complies with a Code of Conduct
- The Supply Chain Act does not apply due to our size
- The materials used are listed in the technical specification
- Resource-saving production: own photovoltaic systems
- Energy-efficient consumption during production: LED lighting

- Repairability, durability and quality: 15-year warranty on series products made in Germany
- Recyclability: Our products are mostly made of aluminium, steel or wood and can be fed directly into the recycling process.
- Socially acceptable working conditions in production: fair wages, gender equality
- Economical and recyclable packaging: no use of polystyrene, predominantly use of wood and cardboard, small amounts of plastic
- No health hazards for the users

More product pictures

Added value

Industrial grade

Stable and robust for tough everyday working life (including 4-way edging)

- Corrosion-resistant fixtures
- Use of high-quality and high-strength materials
- Versatile and practical accessories



Rail system

- Made-to-measure production of the rail system
- Easy assembly of all components



Versatile solutions

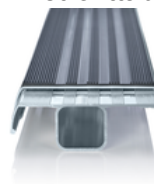
- Ladders available in standard lengths or individual dimensions
- Available with and without roll-top as well as a rotatable version
- Optional spring-loaded castors
- For single and double-sided shelves



clip-step step padding

Optimised and certified non-slip protection for greater comfort and safety

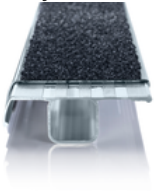
- Made of grooved plastic
- Exact fit and easy to clip onto the steps
- Applied up to the maximum accessible step as a visual check
- Retrofittable and available as spare part



clip-step R 13 step padding

Certified non-slip protection for step ladders

- Fulfils the requirements of the highest possible non-slip class R 13 thanks to aluminium oxide particles
- Improves work safety in wet and oil-contaminated environments
- Applied up to the maximum accessible step as a visual check
- Retrofittable, available as a spare part and also in yellow in selected lengths (RAL 1021)



Corporate certifications

Standards for quality and sustainability

