

Order no.: 042206

Double-sided stepladder
with clip-step relax



Number of steps

2x3

2x4

2x5

2x6

2x7

2x8

2x9

2x10

2x12

2x14

Specification

Working height 2.2 m	Step design Steps	Number of steps/rungs 2x 3 steps	Step depth 80 mm	Step/Rung distance 235 mm
Type of non-slip protection clip-step relax	Height 670 mm	Base spread 690 mm	Inclination 70 °	Lower outer width 440 mm
Depth of side-rails 73 mm	Width of side-rails 25 mm	Max. load capacity 150 kg	Design type Freestanding Double-sided access	Weight 5.9 kg
Transport dimensions 740 x 432 x 212 mm, 5.752 kg	Business division MUNK Günzburger Steigtechnik	Order no. 042206	Price € 255.00	

Facts

- Stepladder made of aluminium
- Stable rectangular tube side-rails
- Grooved steps with a depth of 80 mm
- clip-step relax step paddings for comfortable working
- 4-fold edged step-to-side-rail connection

- Conical side-rail guide for safe stance
- nivello® ladder shoes with patented 2-axis inclination technology
- ergo-pad® grip area with clamping mechanism
- From seven steps or more: Spreader lock with two high-strength polyester straps
- Step spacing: 235 mm
- Ladder inclination: 70°
- Maximum load: 150 kg

Scope of supply

- Ladder: 1 x

Information on sustainability criteria

- Corporate certification: ISO 9001
- Corporate certification: ISO 14001
- Corporate certification: EN 1090
- Corporate certification: EcoVadis
- RoHS
- REACH
- The MUNK Group complies with a Code of Conduct
- The Supply Chain Act does not apply due to our size
- The materials used are listed in the technical specification
- Resource-saving production: own photovoltaic systems
- Energy-efficient consumption during production: LED lighting
- Repairability, durability and quality: 15-year warranty on series products made in Germany
- Recyclability: Our products are mostly made of aluminium, steel or wood and can be fed directly into the recycling process.
- Socially acceptable working conditions in production: fair wages, gender equality
- Economical and recyclable packaging: no use of polystyrene, predominantly use of wood and cardboard, small amounts of plastic
- No health hazards for the users

More product pictures



Added value

Industrial grade

Stable and robust for tough everyday working life (including 4-way edging)

- Corrosion-resistant fixtures
- Use of high-quality and high-strength materials
- Versatile and practical accessories



The movable ladder shoe sets new standards in stability

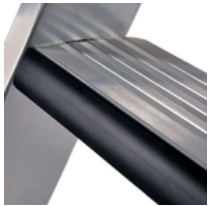
[Learn more](#)



relax step® step padding

Greater comfort during prolonged periods of working on the ladder

- Worked into the leading edge of the step
- Pads the front edge of the ladder step
- Comfortable cushioning for leaning and bracing against the next step



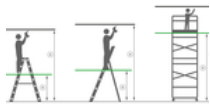
ergo-pad® grip area

For easier and more ergonomic handling at the optimum carrying point







Note: Working heights

- National regulations (e.g. TRBS 2121 Part 2 in Germany) must be complied with with regard to the maximum working height when using the ladder as a workstation.
- Information on [TRBS 2121 Part 2](#) has been summarised on our Service page
- Read our [tips and tricks](#) on how to calculate [working height](#)



Certificates

	25KFP0049-01 - Test Certificate "Bauart geprüft"		17KFP0690-05 - Test Certificate "Bauart geprüft"
Valid in 		Valid in 	
DIN EN 131-1:2019 DIN EN 131-2:2017 DIN EN 131-3:2018 EK5/AK1 17- 02.4:2021 PAK- ANFORDERUNG FÜR GS (PAH REQUIREMENT FOR GS) AFPS GS 2019:01 PAK		DIN EN 131-1:2007 EK5-AK1 17- 02:2017 DIN EN 131-1:2016 DIN EN 131-2:2017 PAK- ANFORDERUNG FÜR GS - ABSCHNITT 3.1(PAH- REQUIREMENT FOR GS - CL. 3.1) AFPS GS 2014:01 PAK	

Corporate certifications

on sustainability criteria



Management
System
ISO 9001:2015
ISO 14001:2015

www.tuv.com
ID 9108612548

