



Order no.: 033512

Double-sided rung ladder suitable for stairs



Number of rungs

- 2x5
- 2x6
- 2x7
- 2x8

Specification

Working height 3.1 m	Step design Rungs	Number of steps/rungs 2x 6 rungs	Step/Rung height 30 mm	Step depth 30 mm
Step/Rung distance 280 mm	Type of non-slip protection Aluminium corrugated	Height 1.75 m	Ladder length 1.8 m	Base spread 1.26 m
Base spread max. extended 1.72 m	Inclination 70 °	Lower outer width, ascent unit extended 670 mm	Lower outer width, ladder retracted 630 mm	Lower outer width, support part extended 730 mm
Max. adjustment range on the ascent unit 400 mm	Max. adjustment range on the support part 1 m	Depth of side-rails 58 mm	Width of side-rails 25 mm	Max. load capacity 150 kg
Design type Freestanding Double-sided access Suitable for stairs	Transport dimensions (plus packaging) 1810 x 615 x 225 mm, 14 kg	Business division MUNK Günzburger Steigtechnik	Order no. 033512	

Facts

- Double-sided rung ladder made of aluminium
- Stable rectangular tube side-rails

- Rectangular rungs grooved on both sides, 30 x 30 mm
- 4-fold edged rung-to-side-rail connection
- Conical side-rail guide for safe stance
- nivello® ladder shoes with patented 2-axis inclination technology
- Solid, galvanised steel hinges with screw attachment
- Plastic end caps on upper side-rail end
- Spreader lock with two high-strength polyester straps
- Transport securing straps
- Rung distance: 280 mm
- Four bar extensions with solid sliding guide and ergonomic star handle
- Adjustment range on the ascent section: max. 400 mm
- Adjustment range on the support section: max. 1,000 mm
- Maximum load: 150 kg

Scope of supply

- Ladder: 1 x

Information on sustainability criteria

- Corporate certification: ISO 9001
- Corporate certification: ISO 14001
- Corporate certification: EN 1090
- Corporate certification: EcoVadis
- RoHS
- REACH
- The MUNK Group complies with a Code of Conduct
- The Supply Chain Act does not apply due to our size

- The materials used are listed in the technical specification
- Resource-saving production: own photovoltaic systems
- Energy-efficient consumption during production: LED lighting
- Repairability, durability and quality: 15-year warranty on series products made in Germany
- Recyclability: Our products are mostly made of aluminium, steel or wood and can be fed directly into the recycling process.
- Socially acceptable working conditions in production: fair wages, gender equality
- Economical and recyclable packaging: no use of polystyrene, predominantly use of wood and cardboard, small amounts of plastic
- No health hazards for the users

More product pictures

Added value

Industrial grade

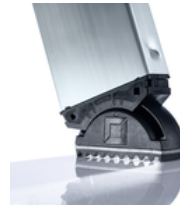
Stable and robust for tough everyday working life (including 4-way edging)

- Corrosion-resistant fixtures
- Use of high-quality and high-strength materials
- Versatile and practical accessories



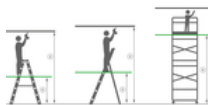
The movable ladder shoe sets new standards in stability

[Learn more](#)



Note: Working heights

- National regulations (e.g. TRBS 2121 Part 2 in Germany) must be complied with with regard to the maximum working height when using the ladder as a workstation.
- Information on [TRBS 2121 Part 2](#) has been summarised on our Service page
- Read our [tips and tricks](#) on how to calculate [working height](#)



Certificates



25KFP0555-01 -
Test Certificate
"Bauart geprüft"

Valid in

DIN EN 131-1:2019
DIN EN 131-2:2017
DIN EN 131-3:2018
EK5/AK1 17-
02.4:2021
PAK-
ANFORDERUNG
FÜR GS (PAH
REQUIREMENT
FOR GS) AFPS GS
2019:01 PAK

Corporate certifications

Standards for quality and sustainability



Management System
ISO 9001:2015
ISO 14001:2015
www.tuv.com
ID 9108612548

