

Order no.: 052508

Platform ladder, mobile



Number of steps

- 8
- 9
- 11



Specification

Working height 3.85 m	Step design Steps	Number of steps/rungs 8 steps	Platform included as step Yes	Platform height 1.85 m
Step width 530 mm	Step depth 80 mm	Step/Rung distance 235 mm	Height 2.87 m	Base spread 1.46 m
Inclination 70 °	Outer width 650 mm	Stabiliser width 1.2 m	Depth of side-rails 73 mm	Depth of side-rails, support 58 mm
Width of side-rails 25 mm	Max. load capacity 150 kg	Design type Freestanding Single-sided access With chassis beam	Weight 46.8 kg	Transport dimensions 2660 x 656 x 275 mm, 48 kg
Business division MUNK Günzburger Steigtechnik	Order no. 052508	Price € 1,778.00		

Facts

- Platform ladder made of aluminium
- Stable rectangular tube side-rails
- Grooved steps with a depth of 80 mm

- Spacious platform with grooves for secure footing (510 x 600 mm)
- 4-fold edged step-to-side-rail connection
- With handrail on both sides, 3-sided, 1,000 mm high railing with knee and foot rails
- Support part with stabilising stabiliser bar for high stability
- Integrated Ø 125 mm fixed castors with locking device for quickly moving to a new location
- nivello® ladder shoes with patented 2-axis inclination technology
- Easy to assemble (delivered unassembled)
- Outer width: 650 mm (without stabiliser)
- Step spacing: 235 mm
- Ladder inclination: 70°
- Maximum load: 150 kg

Scope of supply

- Ladder: 1 x
- Handrail (enclosed separately): 2 x
- Instructions for use and operation: 1 x

Information on sustainability criteria

- Corporate certification: ISO 9001
- Corporate certification: ISO 14001
- Corporate certification: EN 1090
- Corporate certification: EcoVadis
- RoHS
- REACH
- The MUNK Group complies with a Code of Conduct
- The Supply Chain Act does not apply due to our size
- The materials used are listed in the technical specification
- Resource-saving production: own photovoltaic systems

- Energy-efficient consumption during production: LED lighting
- Repairability, durability and quality: 15-year warranty on series products made in Germany
- Recyclability: Our products are mostly made of aluminium, steel or wood and can be fed directly into the recycling process.
- Socially acceptable working conditions in production: fair wages, gender equality
- Economical and recyclable packaging: no use of polystyrene, predominantly use of wood and cardboard, small amounts of plastic
- No health hazards for the users

More product pictures



Added value

Safe working

- Handrails for safe ascent and descent
- Large-format, non-slip platforms
- Conical side-rail guide for safe stance
- Railings and knee boards for safe access and stance



Castors

- Ergonomic and comfortable handling
- Simple movement from place to place



Industrial grade

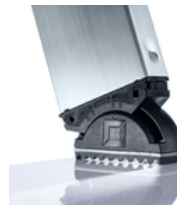
Stable and robust for tough everyday working life (including 4-way edging)

- Corrosion-resistant fixtures
- Use of high-quality and high-strength materials
- Versatile and practical accessories



The movable ladder shoe sets new standards in stability

[Learn more](#)



Certificates



5011053.24003 -
Certificate Product
Safety Type
approved

Valid in



DIN EN 131-7:2013
DIN EN 131-3:2018

Corporate certifications

on sustainability criteria

