



Order no.: 041603

Double-sided stepladder  
with clip-step



Number of steps

2x3

2x4

2x5

2x6

2x7

2x8

2x9

2x10

2x12

2x14

Specification

Working height 2.2 m	Step design Steps	Number of steps/rungs 2x 3 steps	Step depth 80 mm	Step/Rung distance 235 mm
Type of non-slip protection clip-step	Height 670 mm	Base spread 690 mm	Inclination 70 °	Lower outer width 440 mm
Depth of side-rails 73 mm	Width of side-rails 25 mm	Max. load capacity 150 kg	Design type Freestanding   Double-sided access	Transport dimensions 740 x 432 x 212 mm, 5.28 kg
Business division MUNK Günzburger Steigtechnik	Order no. 041603			

Facts

- Stepladder made of aluminium
- Stable rectangular tube side-rails
- Grooved steps with a depth of 80 mm
- clip-step step padding for optimised non-slip protection
- 4-fold edged step-to-side-rail connection

- Conical side-rail guide for safe stance
- nivello® ladder shoes with patented 2-axis inclination technology
- ergo-pad® grip area with clamping mechanism
- 'safe-cap' ladder joint
- From seven steps or more: Spreader lock with two high-strength polyester straps
- Step spacing: 235 mm
- Ladder inclination: 70°
- Available with and without step padding
- Maximum load: 150 kg

### Scope of supply

- Ladder: 1 x

### Information on sustainability criteria

---

- Corporate certification: ISO 9001
- Corporate certification: ISO 14001
- Corporate certification: EN 1090
- Corporate certification: EcoVadis
- RoHS
- REACH
- The MUNK Group complies with a Code of Conduct
- The Supply Chain Act does not apply due to our size
- The materials used are listed in the technical specification
- Resource-saving production: own photovoltaic systems
- Energy-efficient consumption during production: LED lighting
- Repairability, durability and quality: 15-year warranty on series products made in Germany
- Recyclability: Our products are mostly made of aluminium, steel or wood and can be fed directly into the recycling process.
- Socially acceptable working conditions in production: fair wages, gender equality

- Economical and recyclable packaging: no use of polystyrene, predominantly use of wood and cardboard, small amounts of plastic
- No health hazards for the users

## More product pictures

---



## Added value

---

### Industrial grade

Stable and robust for tough everyday working life (including 4-way edging)

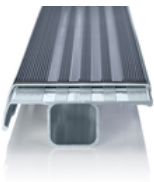
- Corrosion-resistant fixtures
- Use of high-quality and high-strength materials
- Versatile and practical accessories



### clip-step step padding

Optimised and certified non-slip protection for greater comfort and safety

- Made of grooved plastic
- Exact fit and easy to clip onto the steps
- Applied up to the maximum accessible step as a visual check
- Retrofittable and available as spare part



The movable ladder shoe sets new standards in stability

[Learn more](#)



### ergo-pad® grip area

For easier and more ergonomic handling at the optimum carrying point



#### Note: Working heights

- National regulations (e.g. TRBS 2121 Part 2 in Germany) must be complied with with regard to the maximum working height when using the ladder as a workstation.
- Information on [TRBS 2121 Part 2](#) has been summarised on our Service page
- Read our [tips and tricks](#) on how to calculate [working height](#)



## Certificates

---



# Corporate certifications

---

## Standards for quality and sustainability



Management System  
ISO 9001:2015  
ISO 14001:2015  
[www.tuv.com](http://www.tuv.com)  
ID 9108612548



**Nachhaltigkeit**

**EcoVadis**  
sustainable supply management

CSR-Rating in Silber 2022

