



Order no.: 041308

Step shelf ladder, hook-in



Number of steps

6

8

10

12

14

16

18

Specification

Working height 3.3 m	Step design Steps	Number of steps/rungs 8 steps	Step width 370 mm	Step depth 80 mm
Step/Rung distance 235 mm	Vertical hook-in height 2.05 m	Ladder length 2.19 m	Base area 750 mm	Inclination 70 °
Outer width 420 mm	Max. load capacity 150 kg	Design type To hang up	Transport dimensions (plus packaging) 2191 x 425 x 123 mm, 6 kg	Business division MUNK Günzburger Steigtechnik
Order no. 041308				

Facts

- Step shelf ladder made of aluminium
- Stable rectangular tube side-rails
- Grooved steps with a depth of 80 mm
- 4-fold edged step-to-side-rail connection
- Non-slip ladder shoes

- Sturdy lay-on hooks Ø 35 mm at the upper end for safe standing
- Storage hook, Ø 35 mm, for compactly storing when not in use
- Step spacing: 235 mm
- Ladder width: 420 mm
- Ladder inclination: 70°
- Maximum load: 150 kg
- Note: Shelf ladders are manufactured in standard lengths stated here as well as individually made to measure. Please indicate the exact vertical hook-in height – the price includes the next higher ladder and a flat rate for changes of 51.00 euros RRP excluding VAT. Shelf ladders made to size are non-returnable

Scope of supply

- Ladder: 1 x
- Instructions for use and operation: 1 x

Information on sustainability criteria

- Corporate certification: ISO 9001
- Corporate certification: ISO 14001
- Corporate certification: EN 1090
- Corporate certification: EcoVadis
- RoHS
- REACH
- The MUNK Group complies with a Code of Conduct
- The Supply Chain Act does not apply due to our size
- The materials used are listed in the technical specification
- Resource-saving production: own photovoltaic systems
- Energy-efficient consumption during production: LED lighting
- Repairability, durability and quality: 15-year warranty on series products made in Germany

- **Recyclability:** Our products are mostly made of aluminium, steel or wood and can be fed directly into the recycling process.
- **Socially acceptable working conditions in production:** fair wages, gender equality
- **Economical and recyclable packaging:** no use of polystyrene, predominantly use of wood and cardboard, small amounts of plastic
- **No health hazards for the users**

[More product pictures](#)

Added value

Industrial grade

Stable and robust for tough everyday working life (including 4-way edging)

- Corrosion-resistant fixtures
- Use of high-quality and high-strength materials
- Versatile and practical accessories



Rail system

- Made-to-measure production of the rail system
- Easy assembly of all components



Versatile solutions

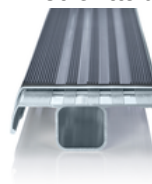
- Ladders available in standard lengths or individual dimensions
- Available with and without roll-top as well as a rotatable version
- Optional spring-loaded castors
- For single and double-sided shelves



clip-step step padding

Optimised and certified non-slip protection for greater comfort and safety

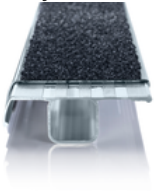
- Made of grooved plastic
- Exact fit and easy to clip onto the steps
- Applied up to the maximum accessible step as a visual check
- Retrofittable and available as spare part




clip-step R 13 step padding

Certified non-slip protection for step ladders

- Fulfils the requirements of the highest possible non-slip class R 13 thanks to aluminium oxide particles
- Improves work safety in wet and oil-contaminated environments
- Applied up to the maximum accessible step as a visual check
- Retrofittable, available as a spare part and also in yellow in selected lengths (RAL 1021)



Certificates



25KFP0454-01 -
Test Certificate
"Bauart geprüft"

Valid in

DIN EN 131-1:2019
DIN EN 131-2:2017
DIN EN 131-3:2018
EK5/AK1 17-
1.3:2021
PAK-
ANFORDERUNG
FÜR GS (PAH
REQUIREMENT
FOR GS) AFPS GS
2019:01 PAK

Corporate certifications

Standards for quality and sustainability

