



Order no.: 041643

Double-sided stepladder with clip-step R13



Number of steps

- 2x3
 2x4
 2x5
 2x6
 2x7
 2x8
 2x9
 2x10
- 2x12
- 2x14

Specification

Working height 3.85 m	Step design Steps	Number of steps/rungs 2x 10 steps	Step depth 80 mm	Step/Rung distance 235 mm
Type of non-slip protection clip-step R13	Height 2.32 m	Base spread 1.89 m	Inclination 70 °	Lower outer width 640 mm
Depth of side-rails 73 mm	Width of side-rails 25 mm	Max. load capacity 150 kg	Design type Freestanding Double-sided access	Transport dimensions (plus packaging) 2495 x 635 x 213 mm, 18 kg
Business division MUNK Günzburger Steigtechnik	Order no. 041643			

Facts

- Stepladder made of aluminium
- Stable rectangular tube side-rails
- Grooved steps with a depth of 80 mm
- 4-fold edged step-to-side-rail connection
- clip-step R13 step padding for certified non-slip protection on all accessible steps

- Conical side-rail guide for safe stance
- nivello® ladder shoes with patented 2-axis inclination technology
- ergo-pad® grip area with clamping mechanism
- Sturdy, solid aluminium ladder joint, securely screwed in place
- Spreader lock with two high-strength polyester straps
- Step spacing: 235 mm
- Ladder inclination: 70°
- Maximum load: 150 kg

Scope of supply

- Ladder: 1 x

Information on sustainability criteria

- Corporate certification: ISO 9001
- Corporate certification: ISO 14001
- Corporate certification: EN 1090
- Corporate certification: EcoVadis
- RoHS
- REACH
- The MUNK Group complies with a Code of Conduct
- The Supply Chain Act does not apply due to our size
- The materials used are listed in the technical specification
- Resource-saving production: own photovoltaic systems
- Energy-efficient consumption during production: LED lighting
- Repairability, durability and quality: 15-year warranty on series products made in Germany
- Recyclability: Our products are mostly made of aluminium, steel or wood and can be fed directly into the recycling process.
- Socially acceptable working conditions in production: fair wages, gender equality

- Economical and recyclable packaging: no use of polystyrene, predominantly use of wood and cardboard, small amounts of plastic
- No health hazards for the users

More product pictures

Added value

Industrial grade

Stable and robust for tough everyday working life (including 4-way edging)

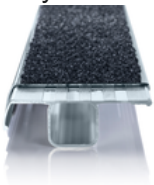
- Corrosion-resistant fixtures
- Use of high-quality and high-strength materials
- Versatile and practical accessories



clip-step R 13 step padding

Certified non-slip protection for step ladders

- Fulfils the requirements of the highest possible non-slip class R 13 thanks to aluminium oxide particles
- Improves work safety in wet and oil-contaminated environments
- Applied up to the maximum accessible step as a visual check
- Retrofittable, available as a spare part and also in yellow in selected lengths (RAL 1021)



The movable ladder shoe sets new standards in stability

[Learn more](#)



ergo-pad® grip area

For easier and more ergonomic handling at the optimum carrying point



Note: Working heights

- National regulations (e.g. TRBS 2121 Part 2 in Germany) must be complied with with regard to the maximum working height when using the ladder as a workstation.
- Information on [TRBS 2121 Part 2](#) has been summarised on our Service page
- Read our [tips and tricks](#) on how to calculate [working height](#)



Certificates



25KFP0049-01 -
Test Certificate
"Bauart geprüft"

Valid in

DIN EN 131-1:2019
DIN EN 131-2:2017
DIN EN 131-3:2018
EK5/AK1 17-
02.4:2021
PAK-
ANFORDERUNG
FÜR GS (PAH
REQUIREMENT
FOR GS) AFPS GS
2019:01 PAK

Corporate certifications

Standards for quality and sustainability

