

Order no.: 011233

Double-sided ML stepladder



Number of steps

2x3

2x4

2x5

2x6

2x7

Specification

Working height 2.25 m	Step design Stufen	Number of steps/rungs 2x 3 steps	Step depth 80 mm	Step/Rung distance 235 mm
Type of non-slip protection Aluminium geriffelt	Height 690 mm	Base spread 660 mm	Inclination 70 °	Lower outer width 430 mm
Depth of side-rails 50 mm	Max. load capacity 150 kg	Design type Freistehend Beidseitig begehbar	Transport dimensions (plus packaging) 761 x 430 x 176 mm, 4.5 kg	Business division MUNK Günzburger Steigtechnik
Order no. 011233				

Facts

- Stepladder made of aluminium
- Ergonomically shaped ladder side-rails for easy handling
- Grooved steps with a depth of 80 mm
- High-strength bolted step-to-side-rail connection
- Conical side-rail guide for safe stance

- 2-fold bolted, solid ladder joint made of diecast zinc
- Non-slip ladder shoes
- Spreader lock with two high-strength polyester straps
- Step spacing: 235 mm
- Ladder inclination: 70°
- Maximum load: 150 kg

Scope of supply

- Ladder: 1 x

Information on sustainability criteria

- Corporate certification: ISO 9001
- Corporate certification: ISO 14001
- Corporate certification: EN 1090
- Corporate certification: EcoVadis
- RoHS
- REACH
- The MUNK Group complies with a Code of Conduct
- The Supply Chain Act does not apply due to our size
- The materials used are listed in the technical specification
- Resource-saving production: own photovoltaic systems
- Energy-efficient consumption during production: LED lighting
- Repairability, durability and quality: 15-year warranty on series products made in Germany
- Recyclability: Our products are mostly made of aluminium, steel or wood and can be fed directly into the recycling process.
- Socially acceptable working conditions in production: fair wages, gender equality
- Economical and recyclable packaging: no use of polystyrene, predominantly use of wood and cardboard, small amounts of plastic
- No health hazards for the users

More product pictures



Added value

Industrial grade

Stable and robust for tough everyday working life (including 4-way edging)

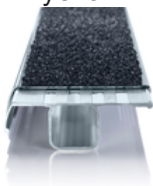
- Corrosion-resistant fixtures
- Use of high-quality and high-strength materials
- Versatile and practical accessories



clip-step R 13 step padding

Certified non-slip protection for step ladders

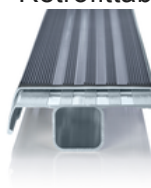
- Fulfils the requirements of the highest possible non-slip class R 13 thanks to aluminium oxide particles
- Improves work safety in wet and oil-contaminated environments
- Applied up to the maximum accessible step as a visual check
- Retrofittable, available as a spare part and also in yellow in selected lengths (RAL 1021)



clip-step step padding

Optimised and certified non-slip protection for greater comfort and safety

- Made of grooved plastic
- Exact fit and easy to clip onto the steps
- Applied up to the maximum accessible step as a visual check
- Retrofittable and available as spare part



Note: Working heights

- National regulations (e.g. TRBS 2121 Part 2 in Germany) must be complied with with regard to the maximum working height when using the ladder as a workstation.
- Information on [TRBS 2121 Part 2](#) has been summarised on our Service page
- Read our [tips and tricks](#) on how to calculate [working height](#)



Certificates



25KFP0050-01 -
Test Certificate
"Bauart geprüft"

Valid in

DIN EN 131-1:2019
DIN EN 131-2:2017
DIN EN 131-3:2018
EK5/AK1 17-
02.4:2021
PAK-
ANFORDERUNG
FÜR GS (PAH
REQUIREMENT
FOR GS) AFPS GS
2019:01 PAK

Corporate certifications

Standards for quality and sustainability

